



# 2024 BUDGET EXECUTIVE BUDGET PROPOSAL

---

PRESENTED BY:

COUNTY EXECUTIVE KEVIN BYRNE

COMMISSIONER OF FINANCE MIKE LEWIS





# #49 NEW YORK

| New York            |         |       |
|---------------------|---------|-------|
|                     | Rank    | Score |
| Overall Rank        | 49 (+0) | 3.45  |
| Corporate Taxes     | 24 (+0) | 5.19  |
| Individual Taxes    | 50 (+0) | 1.88  |
| Sales Taxes         | 43 (-1) | 3.90  |
| Property Taxes      | 49 (+0) | 2.83  |
| Unemp. Insur. Taxes | 40 (-4) | 4.50  |

NEW YORK  
STATE RANKS

**50<sup>TH</sup>** IN  
ECONOMIC  
OUTLOOK

ALEC.ORG

ALEC  
50  
FIFTY YEARS - FIFTY STATES

16<sup>TH</sup>  
EDITION



# RICH STATES, POOR STATES

ALEC-LAFFER STATE ECONOMIC COMPETITIVENESS INDEX



# BY THE NUMBERS

Property Tax Rate

8%

Lower

ZERO

Property Tax Increase

FLAT

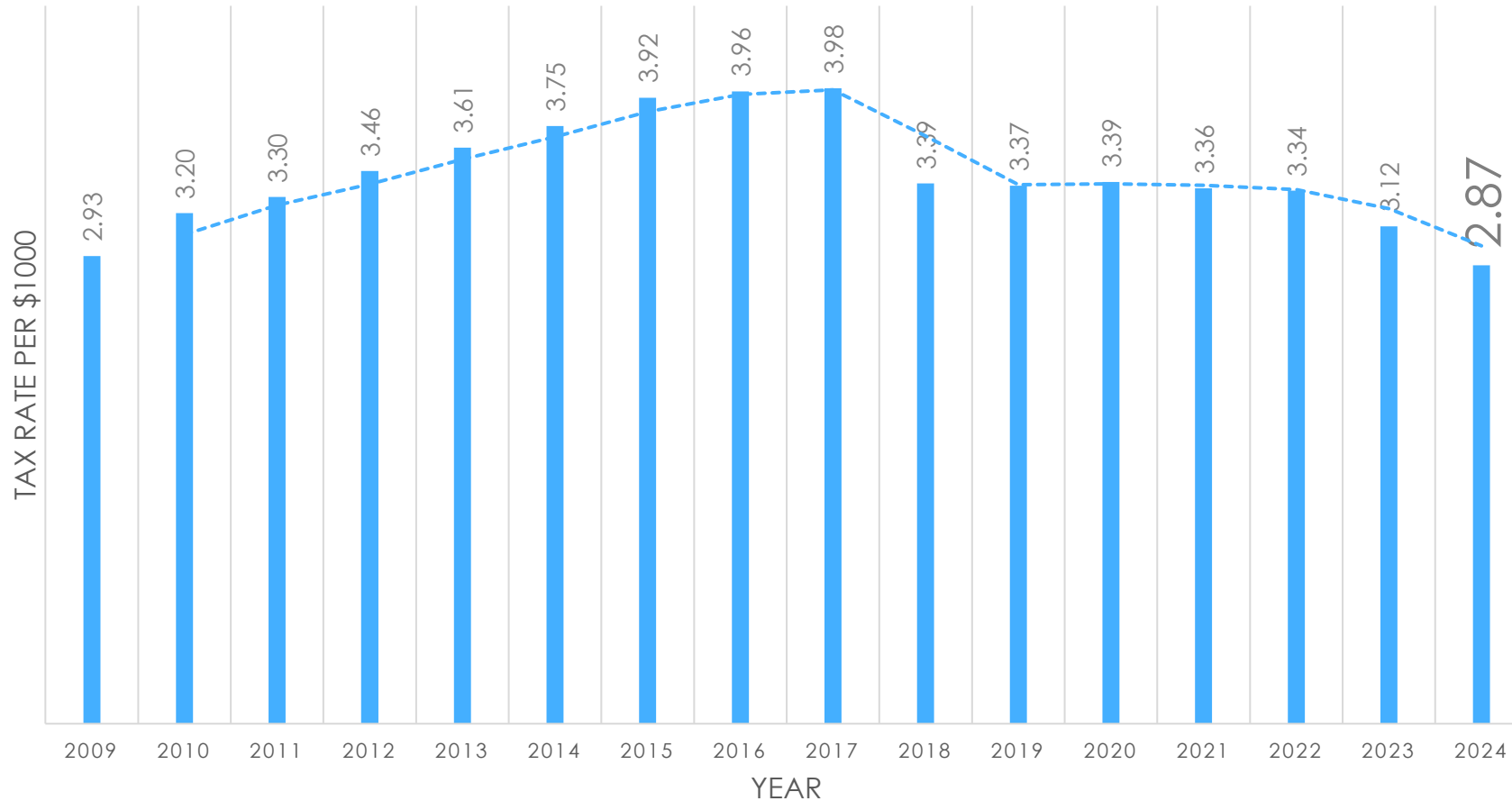
Tax Levy

9%

County Portion  
of your tax bill

# 2024 BUDGET

## PROPERTY TAX RATE %



2.87% Rate  
**LOWEST**  
In 15 years



# PROJECTED REVENUE

Sales Tax: \$77.5 million  
Dept Revenue: \$22 million  
State Aid: \$24.7 million  
Federal Aid: \$9.3 million



# FISCAL

TOTAL COUNTY BUDGET:

**195** MILLION

PROPERTY TAX LEVY:

**46.6** MILLION



2022 BUDGET:

**167** MILLION



2023 BUDGET:

**179** MILLION



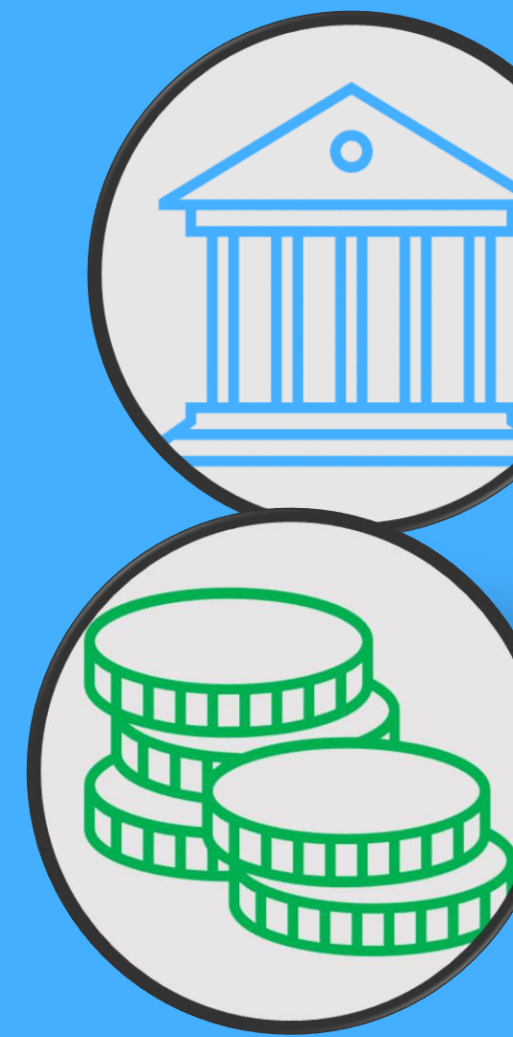
2024 PROPOSED BUDGET:

**195** MILLION

**How did we get here?**

# REGIONAL COUNTY BUDGETS

| County      | 2023 Budget                           | Population (approx.)    | \$ spent per person       |
|-------------|---------------------------------------|-------------------------|---------------------------|
| Putnam      | \$179 million<br>\$195 million (2024) | 97,000<br>98,000 (2024) | \$1,845<br>\$1,989 (2024) |
| Dutchess    | \$588 million                         | 297,000                 | \$1,979                   |
| Orange      | \$923 million                         | 404,000                 | \$2,284                   |
| Rockland    | \$812 million                         | 339,000                 | \$2,395                   |
| Sullivan    | \$268 million                         | 79,000                  | \$3,392                   |
| Ulster      | \$333 million                         | 183,000                 | \$1,820                   |
| Westchester | \$2.4 billion                         | 998,000                 | \$2,404                   |



(Neighboring counties not yet adjusted for 2024)

\*Respective County websites

An aerial photograph of a residential complex, possibly a university campus, with several large buildings and parking lots. The image is overlaid with a semi-transparent blue filter. On the left side, there is a white rounded rectangle containing the text 'AA1 BOND RATING'. To the right of this rectangle, there are two lines of white text: 'Strong Economic Outlook' and 'No longer guarantees low interest rates'. At the bottom right corner, there is a small white footnote: '\*Rating by Moody's'.

# AA1

BOND RATING

Strong Economic Outlook

No longer guarantees low  
interest rates

\*Rating by Moody's

An aerial photograph of a residential development, including houses, a church steeple, and a parking lot, overlaid with a semi-transparent blue filter. The text is white and stands out against the blue background.

**\$7.8 Million**

from General Fund for

**LARGE SCALE CAPITAL PROJECTS**

Instead of borrowing at high interest rates  
and paying back over 30 years



**Inflation**

# **INCREASED COSTS**

across the board

# UNFUNDED MANDATES

- Shortfalls in Medicaid
- Comptroller increased retirement contributions



# Your County Tax Dollar



**\$59 MILLION**

\*New York State Association of Counties (NYSAC)

2024 PROPOSED BUDGET:

2023 BUDGET:

**179** MILLION → **195** MILLION

# New Expenditures

Capital Plan Support: \$7.8 million

Medicaid Cut (eFMAP): \$1.5 million

Retirement Contributions: \$1.3 million

ALS Contract: \$1.5 million

Personnel Adjustments: >\$1 million





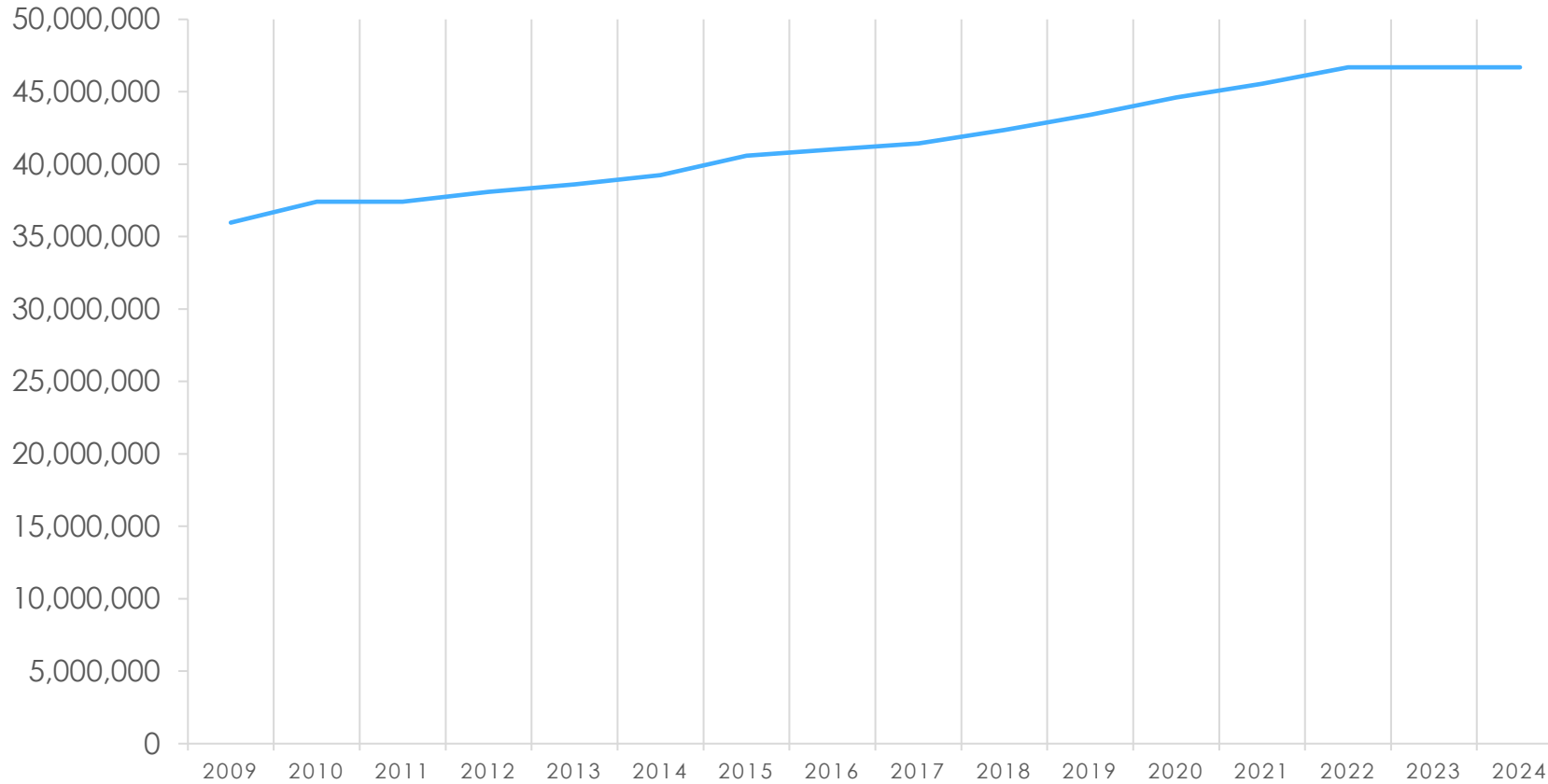
# PROPERTY TAX STABILIZATION FUND

- Added \$1.5 million
- Now at \$5 million



# 2024 BUDGET

## PROPERTY TAX LEVY



Property Tax  
Levy Flat



# SALES TAX EXEMPTION CLOTHING AND FOOTWEAR under \$110



Reducing tax burden  
in county budget  
for the first time  
since 2000



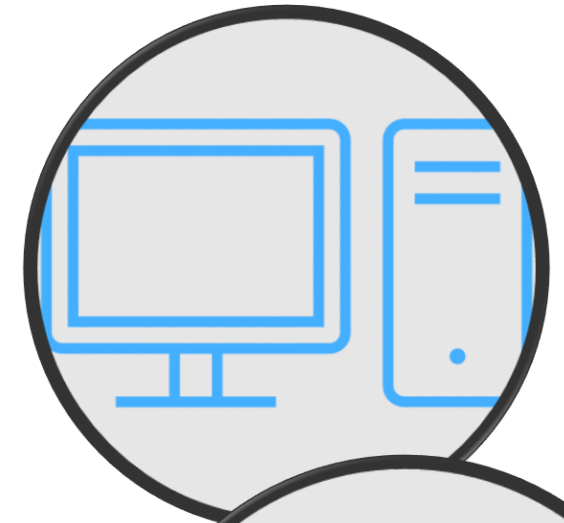


**SAVINGS  
INCENTIVE  
PARTNERSHIP  
PROGRAM  
(SIPP)**



# CENTRALIZE EXPENSES

Transparency of spending  
Leverage purchasing power





A blue-tinted photograph of a bus chassis in a factory setting. The bus is shown from a side-rear perspective, with its rear door open, revealing the interior steps and seating area. The chassis is supported by jacks. The background shows the industrial interior of a factory with various equipment and structural elements. Overlaid on the image is the text 'DEPARTMENT OF PLANNING, DEVELOPMENT & TRANSPORTATION' in a bold, white, sans-serif font.

**DEPARTMENT OF PLANNING,  
DEVELOPMENT & TRANSPORTATION**





# TAXPAYER TRANSPARENCY AGENDA



# FACILITY IMPROVEMENT PROJECTS FUND



# BEFORE



County Facility Improvement Projects Fund

# AFTER



County Facility Improvement Projects Fund

**BEFORE**



**County Facility Improvement Projects Fund**

**AFTER**



**County Facility Improvement Projects Fund**

# BEFORE



County Facility Improvement Projects Fund



# AFTER



County Facility Improvement Projects Fund

# BEFORE



County Facility Improvement Projects Fund

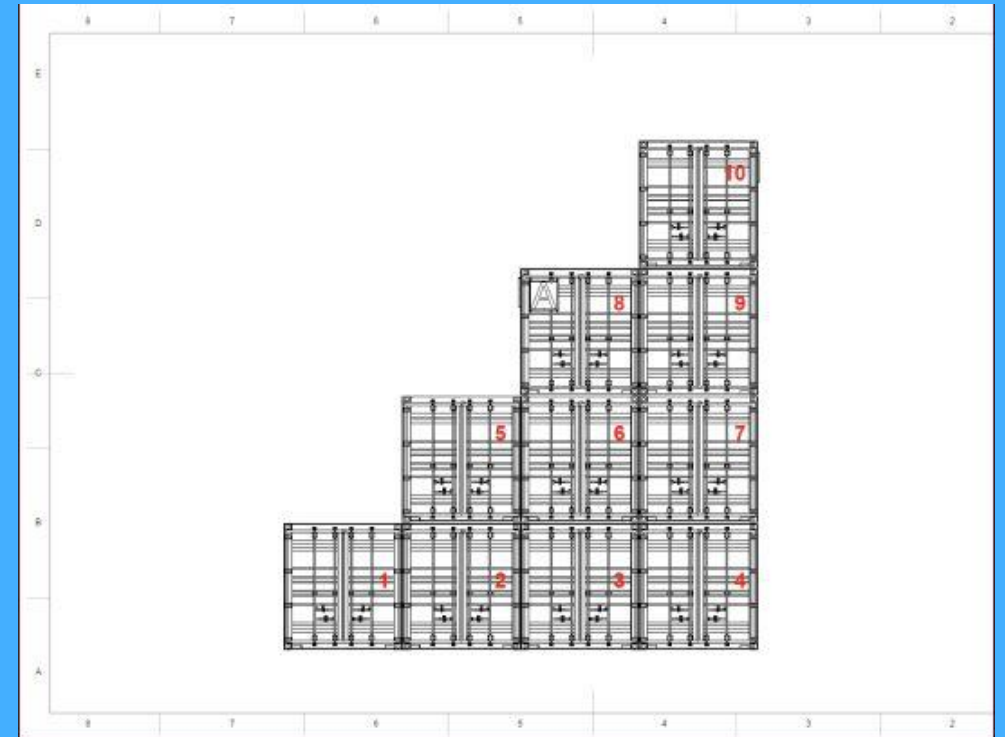
# AFTER



County Facility Improvement Projects Fund



# FIRE TRAINING CENTER





# PEEKSKILL HOLLOW ROAD







An aerial photograph of a serene lake surrounded by dense green trees. A wooden dock with a metal railing extends into the water on the left side. In the background, a small house is visible on a grassy bank. The entire image is overlaid with a semi-transparent blue gradient. The text "MENTAL HEALTH SERVICES" is centered in a bold, white, sans-serif font.

# MENTAL HEALTH SERVICES

# **DIRECTOR OF MENTAL HEALTH**

# OPIOID SETTLEMENT FUNDS





**COMMUNITY ASSISTANCE INITIATIVE  
&  
MUNICIPAL PARTNERSHIP INITIATIVE**





**ThinkDIFFERENTLY.**



# 2024 Executive Budget

New Financial Controls

Keeps Tax Levy Flat

Lowers Taxes

New Services









**THANK YOU!**

---